



resolute
Forest Products

ESG AT RESOLUTE 2023

<p>100% managed forests third-party certified</p>	<p>89% GHG emission reduction (scope 1 and 2) since 2000¹</p>	<p>Domtar We are the fiber for the future Our new brand in 2024*</p>	<p>80% renewable energy use</p>
<p>OSHA incident rate of 0.63</p>		<p>Close to 40 Indigenous partnerships and consultative relationships</p>	<p>Renewed 18² collective agreements (1,520 employees)</p>



At Resolute Forest Products, our business and sustainability strategies have been expressly developed to align our efforts in environmental stewardship and social responsibility with our business objectives.

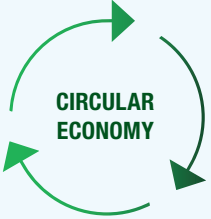
* On October 24, 2024, the Paper Excellence Group announced the operational integration of Domtar Corporation and Resolute Forest Products with the legacy Paper Excellence business, under the name of Domtar. The information in this leaflet pertains to Resolute's sustainability performance for the 2023 reporting year. Future sustainability reports will be published under the unified company, Domtar.

RESOLUTE'S ESG PERFORMANCE DRIVEN BY OUR LEADERSHIP ON SUSTAINABILITY

Resolute provides **indispensable products for basic human necessities** – such as shelter, personal care and education – and we contribute to the health and welfare of society.


Leveraging modern practices, we steward **renewable, sustainable, fossil-free resources**; seek resource maximization and waste minimization through **integration and innovation**; and play an important role in **fighting climate change**.

Our fundamental goal is to **generate value for the company** while driving economic activity in a sustainable and responsible way. Our success supports community economic growth and prosperity, social well-being and advancement, and shared environmental benefit.



CIRCULAR ECONOMY

Our sustainability strategy, based on a balanced approach to environmental, social and economic performance, is aligned with the principles of the circular economy.



Sustainability strategy

Environmental

Manage the resources in our care with the highest respect, differentiating the company as an environmental supplier of choice.

Social

Position Resolute as an attractive employer – one where employees learn, grow and succeed.

Engage and collaborate with our operating communities, contributing to their prosperity.

Economic

Operate assets to the best of our ability and make the most of what we have, earning the right to be in business.

Sustainability governance and reporting

Oversight

Cross-functional, senior-level sustainability committee reports to executive team – setting targets, monitoring progress and reporting on performance according to United Nations Sustainable Development Goals (SDGs), Sustainability Accounting Standards Board (SASB) and Global Reporting Initiative (GRI) Standards.



Commitments

Public commitments, long-term aspirational goals and annually revised targets for continuous improvement that maintain Resolute's leadership position.

To learn more, visit the **Public Commitments** section of our website.

Recognition

Regional, North American and global awards and accolades for our leadership in ESG (environmental, social, governance), CSR (corporate social responsibility) and sustainable development.



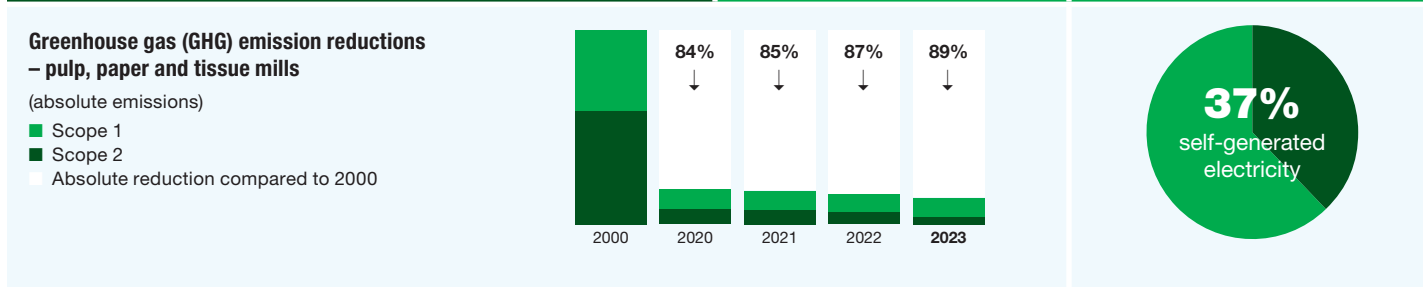
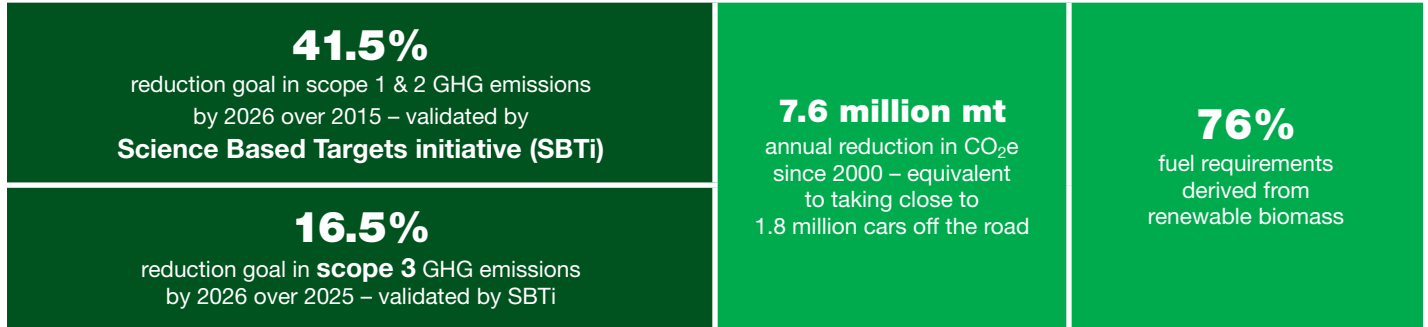
ENVIRONMENTAL INDICATORS OF SUSTAINABILITY

Proactive for the planet



Managing our carbon footprint responsibly

Taking appropriate steps to responsibly manage climate change is a primary area of focus of Resolute's sustainability strategy.



Ensuring the sustainability of the forests in our care

Forest products demonstrate the circular economy in action, beginning with the primary input: fiber, a renewable, natural resource.



Beyond legal and regulatory requirements

Our goal is to minimize the environmental impacts of Resolute's operating activities.

100%

operations environmental management systems certified, to ISO 14001:2015³

94%

water withdrawals returned to environment⁴

42%

reduction of environmental incidents over 2015

98%

mill residues diverted from landfill⁵



Consulted

485

individual stakeholders in our 2023 materiality assessment⁶



CDP Climate, Forest and Water

A- for Forests (leadership level)
B for Climate (management level)
B for Water (management level)

EcoVadis

Scored 57

(64th percentile) on 2023 assessment

1. Absolute GHG emission reduction in scope 1 and 2 at pulp, paper and tissue mills since 2000.
2. Thirteen collective agreements covering 1,000 hourly employees in pulp and paper and woodlands operations, and five collective agreements were extended for a duration of four years covering 520 employees at our wood products facilities.
3. Excluding Talladega (Alabama) chip mill and Senneterre (Quebec) thermal plant.
4. Based on internal modeling of annual water consumption.
5. Waste diversion includes beneficial use, energy recovery, recycling or other reuse.
6. A materiality assessment was conducted across Domtar, engaging 85 internal and external stakeholders through interviews and collecting 400 completed online surveys from various stakeholders.

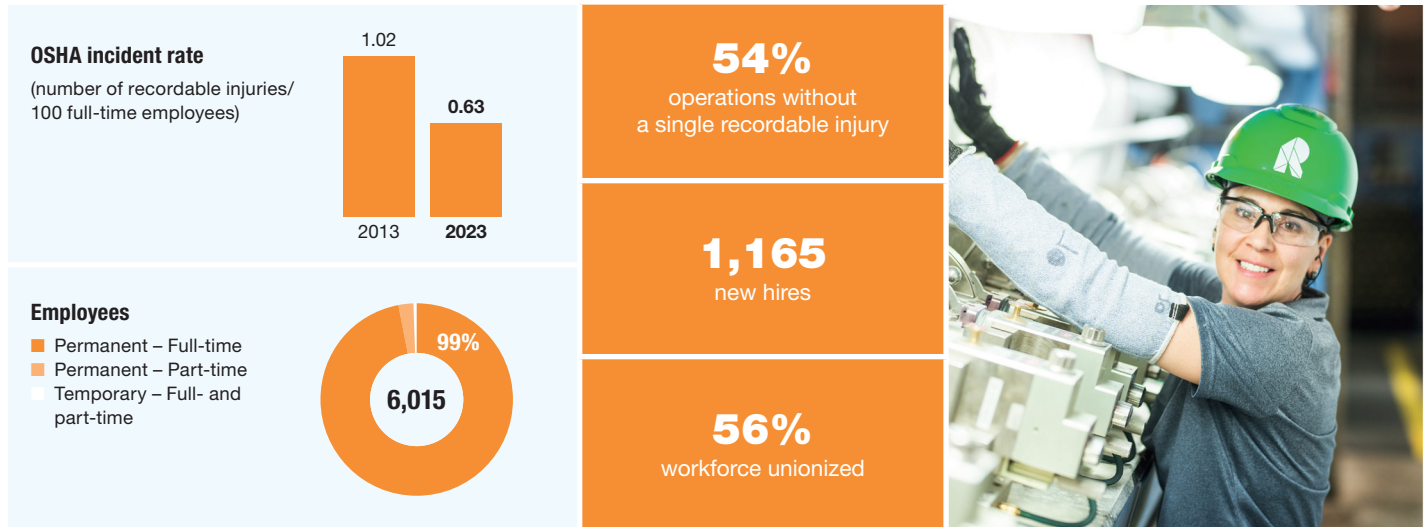
SOCIAL INDICATORS OF SUSTAINABILITY

Committed to people and communities



Safety first

At Resolute, we proudly put safety first, maintaining high standards and continuously improving our results.



Trusted community and Indigenous partner

We strive to be a trusted partner to our host communities and to nearly 40 Indigenous communities and organizations.



Thunder Bay (Ontario) sawmill employees during the National Day for Truth and Reconciliation.

GOVERNANCE INDICATORS OF SUSTAINABILITY

Transparency, accountability and ethics



Conducting business with integrity

We ensure all aspects of Resolute's business are conducted with integrity and transparency.

Human Rights Policy adopted in 2022	Code of Ethics and Business Conduct Policy and hotline for employees on integrity and anti-corruption	Top Quintile on ESG ratings among paper and forest companies ⁷
56% of managers trained on workplace respect and civility with focus on unconscious bias	DE&I diversity, equity and inclusion working committee to steer DE&I strategy and employee engagement	100% of new employees trained on the Code of Ethics and Business Conduct Policy

Ambassadors of achievement

FPAC⁸ Awards of Excellence Alexis Bolduc-Gagnon, superintendent, Health and Safety, at our Dolbeau (Quebec) paper mill, received the Rising Star award.		Globee⁹ Awards: Women in Business Claudia Roberge, superintendent, Health and Safety – Lac-Saint-Jean and Mauricie (Quebec) woodlands operations, received the bronze award in the Female Achiever/Committed Professional of the Year category.	
--	--	--	--

A new chapter begins

The Paper Excellence Group announced the operational integration of Domtar Corporation and Resolute Forest Products with the legacy Paper Excellence business. Now under the name of Domtar, the company is a leading, privately held manufacturer of diversified forest products.⁹



7. Assessed by S&P Global's Corporate Sustainability Assessment, March 2023.

8. Forest Products Association of Canada

9. As of October 24, 2024

Unless otherwise noted, amounts in this document are in U.S. dollars, and data reported is as at December 31, 2023; excludes the Thunder Bay (Ontario) pulp and paper mill, which was held separate until its sale to an affiliate of Atlas Holdings on August 1, 2023.

CONTACT US

 esg.peg@domtar.com

 resolutefp.com/sustainability

OUR OPERATIONS IN 2023

The list below outlines Resolute Forest Products' operations as of 2023, before full integration with Domtar Corporation and the legacy Paper Excellence business announced on October 24, 2024. It includes three non-integrated pulp mills from Paper Excellence Canada, which have been part of the Pulp and Tissue business unit since Q4 2023.

HEADQUARTERS

- 1 Montreal (Quebec)

WOOD PRODUCTS

Sawmills

- 2 Atikokan (Ontario)
- 3 Comtois (Lebel-sur-Quévillon, Quebec)
- 4 Cross City (Florida)
- 5 El Dorado (Arkansas)
- 6 Forest Products Mauricie (La Tuque, Quebec)
- 7 Girardville (Quebec)
- 8 Glenwood (Arkansas)
- 9 Ignace (Ontario)
- 10 La Doré (Quebec)
- 11 Maniwaki (Quebec)
- 12 Mistassini (Quebec)
- 13 Opitciwan (Obedjwan, Quebec)
- 14 Outardes (Pointe-aux-Outardes, Quebec)
- 15 Saint-Félicien (Quebec)
- 16 Saint-Thomas (Quebec)
- 17 Senneterre (Quebec)*
- 18 Thunder Bay (Ontario)

Wood pellet plant

- 19 Thunder Bay (Ontario)

Remanufactured wood products facilities

- 20 Château-Richer (Quebec)
- 21 La Doré (Quebec)

Engineered wood products facilities

- 22 Larouche (Quebec)
- 23 Saint-Prime (Quebec)

Other

- 24 Normandin (Quebec) – Planer mill
- 25 Roberval (Quebec) – Lumber drying facility
- 26 Saint-Prime (Quebec) – Lumber drying facility
- 27 Talladega (Alabama) – Chip production mill

MARKET PULP

- 28 Coosa Pines (Alabama)*
- 29 Howe Sound (British Columbia)¹
- 30 Meadow Lake (Saskatchewan)¹
- 31 Menominee (Michigan)
- 32 Saint-Félicien (Quebec)*
- 33 Skookumchuck (British Columbia)¹

TISSUE

- 34 Calhoun (Tennessee)
- 35 Hagerstown (Maryland)
- 36 Hialeah (Florida)
- 37 Sanford (Florida)

PAPER

- 38 Alma (Quebec)
- 39 Clermont (Quebec)
- 40 Dolbeau (Quebec)*
- 41 Gatineau (Quebec)*
- 42 Grenada (Mississippi)
- 43 Kénogami (Saguenay, Quebec)

WOODLANDS

- 44 Abitibi and Nord-du-Québec (Quebec)
- 45 Côte-Nord (Quebec)
- 46 Lac-Saint-Jean (Quebec)
- 47 Mauricie (Quebec)
- 48 Ontario (Ontario)
- 49 Outaouais (Quebec)
- 50 United States (Tennessee)

ENERGY

- 51 Hydro-Saguenay (Saguenay, Quebec)

*On-site cogeneration/thermal power

1. With the ongoing integration, three Paper Excellence Canada non-integrated pulp mills – Howe Sound (BC), Meadow Lake (SK) and Skookumchuck (BC) – report into the Pulp and Tissue business unit since Q4 of 2023.

